

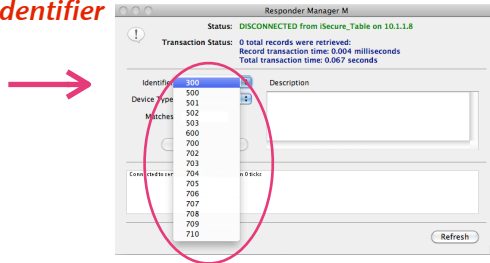
**Response Manager will:**

- 1 - Provide unsurpassed capabilities for Emergency Responders and Security personnel to control and contain a critical situation
- 2 - Automatically and effectively notify appropriate personnel
- 3 - Facilitate ease of use for all Physical Control enabled capabilities

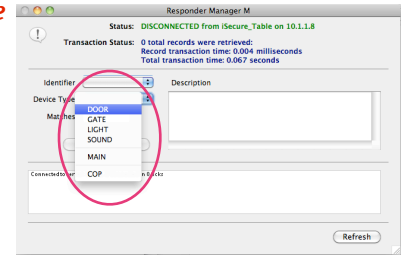
- Simply log in



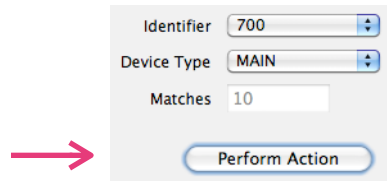
- Select an *Identifier*



- Select a *Device Type*



- Select *Perform Action*



- Action completed



*It's that simple!*

**Automatic:**

As a Physical Control action is performed, your pre-identified trusted sources such as Emergency Responders, Security Personnel and selected individuals simultaneously receive identical information. All recipients see, read and hear the same information. This information is available for reporting needs whenever you need them.

**Control:**

You control who has access to this application. You control who automatically receives the information.

**First Alert, Physical Security, Notifications and Reports**  
**All Seamlessly integrated**  
**All At the Tips of Your Fingers**